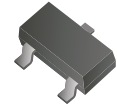


CDBT0540-G

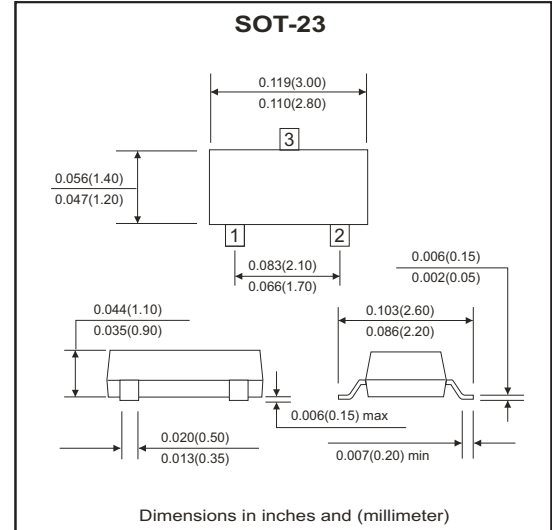
RoHS Device



Features

- Small surface mount type.
- Low reverse current and low forward voltage.
- High reliability.

Marking: D3A



Maximum Ratings (at Ta=25°C unless otherwise noted)

| Parameter | Symbol | Value | Unit |
|---|-----------------|-------------|------|
| Peak reverse voltage | V_{RM} | 40 | V |
| DC reverse voltage | V_R | 40 | V |
| Peak surge forward voltage | I_{FSM} | 3 | A |
| Mean rectifying current | I_o | 0.5 | A |
| Power dissipation | P_D | 250 | mW |
| Thermal resistance, junction to ambient | $R_{\theta JA}$ | 500 | °C/W |
| Junction temperature | T_J | 125 | °C |
| Storage temperature | T_{STG} | -40 to +125 | °C |

Electrical Characteristics (at Ta=25°C unless otherwise noted)

| Parameter | Symbol | Conditions | Min | Typ. | Max | Unit |
|-------------------------------|----------|-------------------|-----|------|------|---------|
| Reverse breakdown voltage | V_{BR} | $I_R=100\mu A$ | 40 | | | V |
| Forward voltage | V_F | $I_F=500mA$ | | | 0.55 | V |
| Reverse current | I_R | $V_R=10V$ | | | 30 | μA |
| | | $V_R=30V$ | | | 50 | μA |
| Capacitance between terminals | C_T | $V_R=0V, f=1MHz$ | | 125 | | pF |
| | | $V_R=10V, f=1MHz$ | | 20 | | pF |

RATING AND CHARACTERISTIC CURVES (CDBT0540-G)

Fig.1 Forward Characteristics

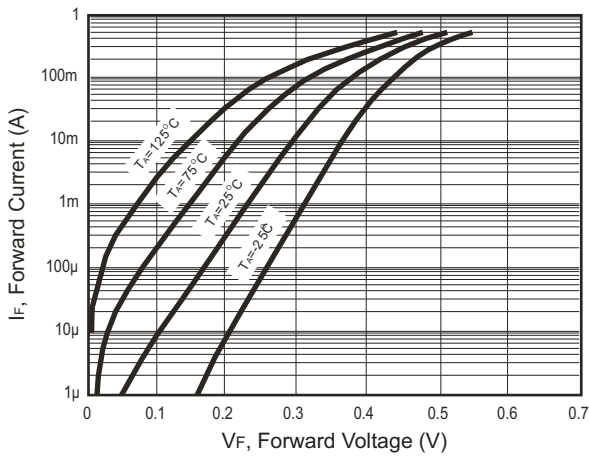


Fig.2 Reverse Characteristics

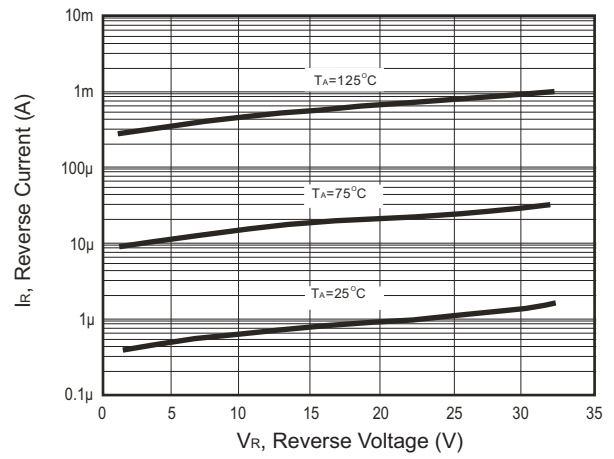


Fig.3 Capacitance Between Terminals Characteristics

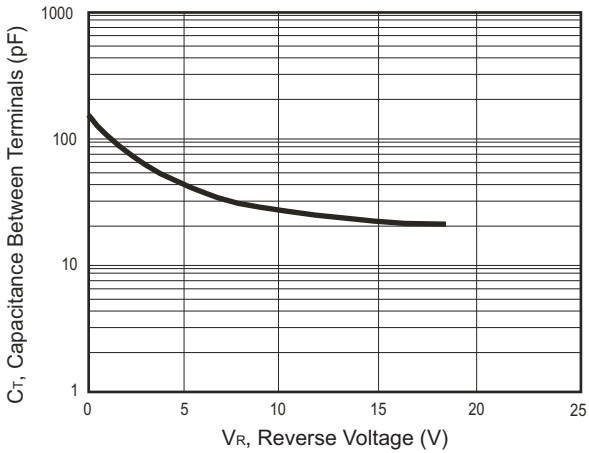


Fig.4 Power Derating Curve

